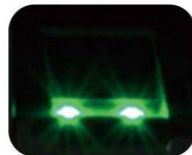




iClock680

Multi-media Fingerprint Time Attendance and Access Control Terminal



Introduction

iClock680 is an innovative biometric fingerprint reader for Time & Attendance and access control applications, offering unparalleled performance using an advanced algorithm for reliability, precision and excellent matching speed. The iClock680 features the fastest commercial-based fingerprint matching algorithm and high - performance , high-image quality optical fingerprint sensor. The 3.5 inch TFT can display more information vividly, including user photo, fingerprint image quality and verification result etc. 8 function keys are the shortcuts to change the attendance status, work-code or to browse the short message, and can be defined as required. TCP/IP communication is standard and make sure the data transmission between terminal and PC can be easily done within several seconds. The camera can capture the image of the user. The iClock580 has access control connectivity for Wiegand-in, Wiegand-out, Door lock connection, Alarm, Bell, Remote to Exit switch.

Features:

- . Color TFT screen with GUI Interface for ease of use.
- . Optical Sensor
- . 1 touch a-second user recognition
- . Stores 8,000 templates and 200,000 transactions
- . Reads Fingerprint and/or PINs
- . Optional integrated proximity or smart card reader
- . Built-in Serial and Ethernet ports
- . Built-in USB port allows for manual data transfer when network isn't available
- . Optional integrated Wi-Fi\ GPRS also available.
- . Relay contacts for alarm, bell, lock, exit, switch, etc
- . 8 user-defined function keys
- . Multi Language Support
- . Built in bell scheduling
- . Real-time 1-touch data export 3rd party hosted & non-hosted applications
- . Audio-Visual indications for acceptance and rejection of valid/invalid fingers
- . SDK available for OEM customers and software developers

Configuration:



Specifications:

Fingerprint Capacity	8000 templates
Transaction Capacity	200,000
Hardware Platform	ZEM600
Sensor	Optical Sensor
Algorithm Version	Finger v10.0
Communication	RS232/485, TCP/IP, USB-host
Camera	300,000 pixels camera
Standard Functions	Workcode, SMS, DLST, Scheduled-bell, Self-Service query, Automatic Status Switch, T9 input, photo-ID, Anti-passback
Access Control Interface for	3rd party electric lock, door sensor, exit button, alarm, Door Bell
Wiegand Signal	Input & Output
Optional Functions	ID/Mifare, Webserver, 9 digit user ID, Wi-Fi, GPRS
Display	3.5 inches TFT Screen
Power Supply	12V DC 1.5A
Operating Temperature	0 °C - 45 °C
Operating Humidity	20%-80%
Dimension	205.6 x 150 x 41.6 mm
Net Weight	1.4 kg